

Fall 1921

KELSEY'S HARDY AMERICAN PLANTS

AUGUST PLANTING OF EVERGREENS

"Saves a Year's Time"



Photo by H. P. K.

THE CAROLINA HEMLOCK (*Tsuga caroliniana*)

"Its dense dark foliage, sweeping semi-pendulous branches and eventually pyramidal form, combine to give a charm not found in any other evergreen known to cultivation." See full description, Page 7. Prices, Page 19.

RHODODENDRONS, MOUNTAIN LAUREL, FIRS, SPRUCES,
HEMLOCKS, ARBORVITAE, PINES, RED CEDARS,
JUNIPERS, LEUCOTHOES, ETC.

HARLAN P. KELSEY, *Owner*, SALEM, MASSACHUSETTS
BOXFORD NURSERY AT EAST BOXFORD, MASSACHUSETTS

AUGUST PLANTING
OF SPECIMEN CONIFERS (CONE-BEARING
EVERGREENS) AND BROADLEAF EVERGREENS
AT
BOXFORD NURSERY,
EAST BOXFORD, MASS.

OFFICE, SALEM, MASSACHUSETTS

1. Adds a new and convenient month to the planting season.
2. Saves a year's growth, becoming fully established before winter.
3. Is highly successful, particularly for the larger material for immediate effects.
4. Relieves the heavy pressure of the short Fall and Spring seasons.

August and early September planting of Evergreens is now an established practice at the best nurseries. All of our plants are handled with a ball and burlaped, and planted by our successful "water-method."

(Azaleas and similar Ericaceous Shrubs may also be moved in August if it is done properly, and splendid flowering results are thus attainable the ensuing season.)

Evergreens, both Conifers and Broadleaf, may be safely planted in autumn and spring if properly done, but August stands pre-eminently as the best month in the year for results.

Boxford Nursery, East Boxford P. O., has hundreds of thousands of specimens to select from. We deliver by truck up to 200 miles or more.

A visit to Boxford Nursery is worth your while. Good automobile roads lead from all points to East Boxford (3 minutes from Boxford Station, B. & M. R. R.). Address Harlan P. Kelsey, Owner, Salem, Mass.

EVERGREENS FOR AUGUST PLANTING



Rhododendron catawbiense var. compacta

The splendid new compact form from the highest peaks of the Alleghanies. Introduced exclusively by Harlan P. Kelsey. Photo taken at Boxford Nursery; showing a block of perfect specimens just coming into bloom. *See description, page 9. Prices, page 18.*

SHORT DESCRIPTIONS

ABIES concolor. Concolor Fir.

Foliage blue-green to blue-gray with broad needles, charming purple or yellow cones. A wonderfully beautiful, long-lived tree.

fraseri. Fraser Fir.

Dark-green, thickset foliage, blue underneath; compact, pyramidal habit. One of our choicest Evergreens especially for New England shore planting. The only permanent "Balsam Fir." Thousands of perfect specimens up to 16 feet. This is a specialty at Boxford Nursery, and we can supply in car lots for mass planting or to the Nursery Trade.

homolepis.

Very distinctive rare Fir, horizontal branches, dark glossy foliage.

veitchi. Veitch Fir.

Strong-growing, ironclad Fir, making a most striking lawn specimen or in groups. Bright green foliage, silver-blue underneath. This rare conifer should be in every collection.

CHAMAECYPARIS (Retinispora) obtusa.

Small graceful tree with "Japanese" effect; bright green foliage. Fine also for low-clipped hedge.

CHAMAECYPARIS obtusa nana.

Very dwarf Japanese Evergreen; picturesque effect. Dark-green shiny foliage, densely tufted.

JUNIPERUS chinensis pfitzeriana.

One of our choicest and hardiest dwarf "spreading" evergreens of the "feathery spray" type.

communis depressa. New England Savin.

The best Juniper for ground cover. Forms vary from completely "prostrate" to the "ascending" bushy types. It is at home on sandy or gravelly hillsides in full sun exposure, or in quite dense shade. Single plants will often reach a diameter of 15 feet or more. It is the hardy type that gives such charm to New England hillsides. Often a beautiful bronze in autumn and winter, and studded with bright blue fruit. Invaluable for landscape plantings.

sabina. Savin.

Semi-erect dwarf, very bushy; fine among rocks and boulders and for borders.

sabina tamariscifolia. Grey Carpet Juniper.

Trailing species with feathery grey "sprays" of foliage. A beautiful rockery plant and for edgings.

virginiana. Red Cedar.

Pyramidal habit; dark-green to bluish foliage, with many variable forms. This is one of the most useful and characteristic trees of our native landscapes. It rivals the Italian Cypress in beauty, is absolutely hardy, and stands sea exposure well. Fruit dark-blue and conspicuous, hanging until mid-winter. For many effects it is the most useful evergreen for northern latitudes. This is a specialty at Boxford Nursery, and we can supply trees up to 30 feet. We have made many notable plantings of large Cedars with uniform success.

virginiana glauca. Blue-Red Cedar.

Striking type with blue-green foliage.

PICEA alcockiana. Alcock Spruce.

A striking spruce, with blue-green foliage effects.

canadensis (alba). White Spruce.

Compact pyramidal growth, with aromatic silver-grey foliage. For seashore planting it is unexcelled, and for northern latitudes is highly recommended for single lawn specimen, massing or for forest.

engelmanni. Engelmann Spruce.

Rocky Mountain evergreen with narrow-pyramidal form of great beauty.

engelmanni glauca. Blue Engelmann Spruce.

Form with silvery-blue foliage.

excelsa. Norway Spruce.

This well-known spruce varies greatly in type, some with very picturesque pendulous branches, and others again of upright growth. A most beautiful conifer, especially where not crowded.

omorika.

Rare and very beautiful. Needles are unusual and conspicuous with white marking. One of the most charming conifers as grown in Arnold Arboretum.

orientalis. Oriental Spruce.

A graceful spruce, with wide, roundish pyramidal form of slow growth. Much used in Japanese gardens.

EVERGREENS FOR AUGUST PLANTING

PICEA pungens. Green Colorado Spruce.

Extremely hardy and well known for its peculiar horizontal whorls of branches and stiff needles. Stands salt air well.

pungens glauca. Blue Colorado Spruce.

Blue form, very conspicuous.

pungens kosteri. Koster Blue Spruce.

Variety with brilliant blue foliage. Propagated by grafting on the green type. Our stock is strictly true to original and unusually well-formed specimens.

PINUS banksiana. Banks Pine.

Quick grower and easy to transplant. Fine, ornamental and very useful for reclaiming "abandoned" or poor soils.



Solid block of 10,000 CAROLINA HEMLOCKS at Boxford Nursery

cembra. Cembrian Pine.

A "dwarf White Pine." This charming species cannot be too highly recommended for rockeries or hillsides, or where space is limited and one wishes to have the soft feathery foliage effect of the beautiful common but large-growing White Pine. We have hundreds of beautiful specimens—narrow, dense pyramids.

densiflora. Japanese Red Pine.

Hardy and of distinctive habit. Very free from diseases and insects, and one of the coming Pines for landscape work and woodlands. A fine stock.

flexilis. Limber Pine.

Of the "White Pine section," from the Rocky Mountains. Picturesque dwarf habit, silver foliage, and especially choice for the rocky hillside and in small Pinetums.

HARLAN P. KELSEY, SALEM, MASSACHUSETTS

PINUS montana. Swiss Mountain Pine.

A "bush" dwarf Pine, with dark-green foliage. Rarely attains 10 to 12 feet, diameter equaling height. Invaluable.

montana mughus. Mugho Pine.

The most useful dwarf Pine for rockeries, ground-cover, and positions where a low-spreading, dark-green effect is needed. Boxford Nursery has thousands of specimens from a few inches to several feet in diameter. The Mugho Pine cannot be too highly recommended.

nigra austriaca. Austrian Pine.

Of the "Black Pine" group, and one of the most beautiful ornamental conifers. Rapid growth and stately habit, the dark-green foliage densely covering the branches. A fine stock of specimen trees.

ponderosa. Bull Pine.

This Western species is extremely hardy, with striking dark-green, long needles. Fine for forestry planting or as a specimen.

pungens. Table Mountain Pine.

From the Southern Alleghanies. Spined cones remain on tree indefinitely, giving a curious and picturesque effect. The growth is quite "Japanesy."

resinosa. Red Pine.

One of our most valuable native Pines, for ornamental or forestry purposes. Long, lustrous green needles, densely tufted. Considered by many even superior to the Austrian Pine. Incorrectly called "Norway" Pine.

rigida. Black Pine.

The common Pine of our New England hillsides—very picturesque.

strobis. White Pine.

This native Pine is easily the king of American conifers, both as an ornamental and as a forestry tree. We have thousands of specimens up to 12 feet. Special prices on large quantities for park or forestry purposes.

sylvestris. Scotch Pine.

Of rapid growth, with attractive reddish bark and bright green foliage of bluish tinge.

thunbergi. Japanese Black Pine.

A very distinctive species with handsome, broad, pyramidal head and orange-yellow branchlets.

PSEUDOTSUGA douglasi. Douglas Fir.

This is one of our most beautiful Rocky Mountain Firs. Very rapid in growth. Soft, lively green foliage, dense habit and in the Northwest becoming a giant forest tree.

douglasi glauca. Blue Douglas Fir.

Form with silvery-blue foliage.

TAXUS canadensis. Canadian Yew.

Hardy ground cover, invaluable for the open or in shade. Bright red berries. In autumn the foliage turns a rich bronze where exposed to the sun.

cuspidata. Japanese Yew.

The only strictly hardy, upright growing Yew for the North. Very dark-green foliage.

cuspidata brevifolia.

Dwarfer and more compact than the type. Japanese effect.

EVERGREENS FOR AUGUST PLANTING

THUJA occidentalis. American Arborvitae.

Fine for hedges or for specimen planting. Becomes a dense, broad pyramid, the bright green foliage turning bronze in winter.

occidentalis pyramidalis. Pyramidal Arborvitae.

Of narrow columnar form, much used in formal gardens.



Photo by H. P. K.

Mass of RHODODENDRONS with Hemlock background at Arnold Arboretum

TSUGA canadensis. Canadian Hemlock.

Our beautiful common Hemlock, and one of the most conspicuous of our Eastern mountain conifers.

caroliniana. Carolina Hemlock.

This grand new species is now universally accepted as the "Queen of American Evergreens." Introduced by Harlan P. Kelsey in 1884, it has become known to tree lovers as the most distinctive and graceful of all conifers which are hardy throughout the entire United States.

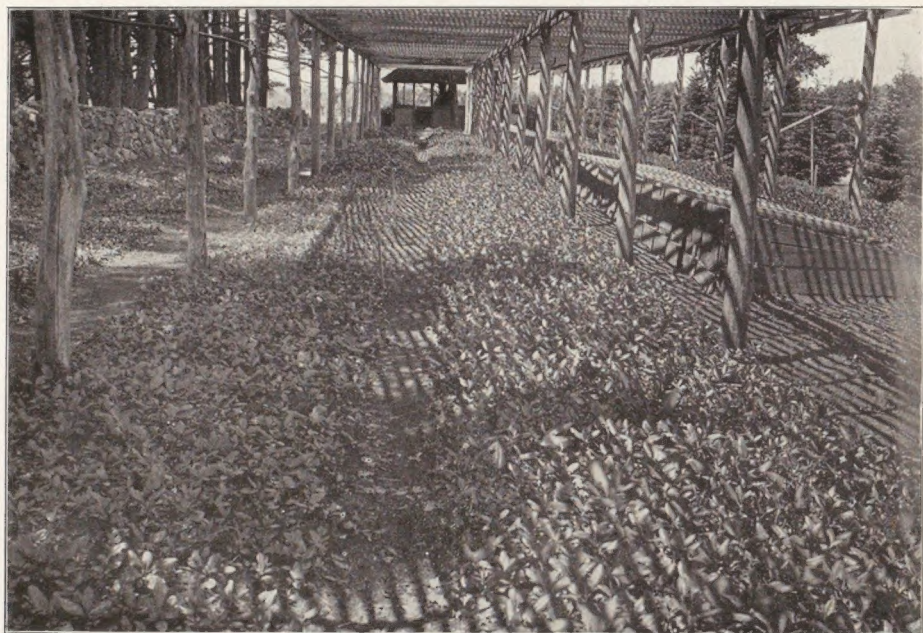
Its dense, dark foliage, sweeping semi-pendulous branches, and eventually pyramidal form, combine to give a charm not found in any other evergreen known to cultivation. It is much harder and more adaptable to city atmospheres than its plainer sister, the Canadian Hemlock, and will also thrive in southern latitudes where the latter becomes thin, yellow and unsightly.

It is the "coming Evergreen" for the finest landscape plantings, either as a single specimen or for mass effects and backgrounds and for hedges.

After the disastrous spring and winter of 1917-18, Prof. C. S. Sargent, Director of Arnold Arboretum, says of this tree: "Numerous specimens of the Carolina Hemlock (*Tsuga caroliniana*) have been uninjured by the cold and drought of the year. This is one of the handsomest of all

cone-bearing trees which can be grown in this part of the country." And, again, in the Nov. 10, 1919, Bulletin of the Arnold Arboretum: "The handsomest of the Hemlocks which can be grown in Massachusetts and now one of the most beautiful trees in the Arboretum is a native of the Southern Appalachian Mountains, *Tsuga caroliniana*."

At Boxford Nursery we have over 30,000 trees, *all specimens*, regardless of size.



Young Rhododendrons, Azaleas and Mountain Laurel grown by tens of thousands at Boxford Nursery

RHODODENDRONS, MOUNTAIN LAUREL and other BROADLEAF EVERGREENS FOR AUGUST and EARLY AUTUMN PLANTING

Send for "The Successful Rhododendron Bed"; it tells how.

RHODODENDRON *catawbiense*. Catawba Rhododendron.

Of the Carolina Mountains. The hardiest of all Rhododendrons. It was this magnificent Rhododendron that over a hundred years ago was introduced into Europe, supplying, together with *Rhododendron maximum*, color and hardy blood to the cultivated "hybrids," but with a consequent loss of hardiness; and so today, for American gardens, where ironclad hardiness is essential, we must turn to the true original species, found on the loftiest, coldest peaks of the Southern Alleghanies, where it attains a height of 20 to 30 feet. Considering its extreme hardiness, color of flower, compact growth and remarkable texture of foliage, which is a deep, shining green, and far superior to the better-known *Rhododendron maximum*, we can recommend the true native *catawbiense* as the finest for general use, withstanding exposure and extremes of

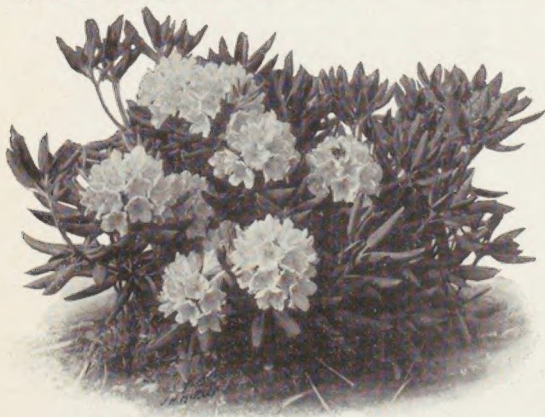
EVERGREENS FOR AUGUST PLANTING

temperature where other Rhododendrons fail. Unlike *Rhododendron maximum*, it is a very free bloomer, with foliage of a dark, rich, lasting green. The trusses are a bright red-purple (in marked contrast to the muddy purple of the semi-hardy, half-breed imported variety), and as sent out by Boxford Nursery is always on its own roots. For massing to produce a broadleaf evergreen landscape effect there is no plant equal to it in the latitude of the Northern United States and Canada, where strictly hardy plants must be employed.



The true RHODODENDRON CATAWBIENSE. Red-purple
The finest foliage of all Rhododendrons

RHODODENDRON *catawbiense* var. *compacta*.



Typical clump of RHODODENDRON CATAWBIENSE
var. *compacta*.

New introduction of Harlan P. Kelsey. A very compact-growing form from the highest peaks of the Southern Alleghany Mountains, with dark-green foliage, entirely distinct from the *catawbiense* type in usual cultivation. We offer this for the first time in perfect specimens.

catawbiense hybrids.

We have only the hardiest sorts. They are becoming difficult to secure, owing to Federal Quarantine regulations shutting out all foreign-grown stock.



Rhododendron carolinianum in the border with background of Conifers

carolinianum. Carolina Rhododendron.

The smallest Alleghanian species, though it often attains a height of 15 feet and is widespreading. A very graceful shrub, with totally different aspect from the other native Rhododendrons. Leaves dark-green, usually blunt and narrow, covered with rusty dots below; much smaller than either maximum or catawbiense. Flower clusters appear in greatest profusion in June, covering the plant with a brilliant rose-colored mantle. Fine for rocky slopes or hillsides, standing exposure unusually well, and invaluable as a single specimen or for massing with other species.



The rare RHODODENDRON CAROLINIANUM
A beautiful clear pink

EVERGREENS FOR AUGUST PLANTING

RHODODENDRON maximum. Great American Rosebay.

Perfectly hardy in the latitude of Quebec.

Rhododendron maximum is without doubt the noblest of American broadleaf shrubs. It is found growing sparingly in New England and New York, more abundantly in the Pennsylvania mountains, but reaching perfection only in the high, cold Southern Alleghany Mountains, where

it grows in such luxuriance as to form a striking feature in the mountain landscape. Its large, waxy white, or delicately pink flowers appear in large trusses in late June and July, the latest of all the Rhododendrons, greatly enhancing its ornamental value as a broadleaf evergreen for finished landscape effect.

Not even in Asia do Rhododendrons grow more luxuriantly than in our Southern Alleghany Mountains, where they attain a height of 30 feet or more. They must be seen in their native lavishness of growth and bloom on the mountainsides or hanging over the dashing ice-cold streams and waterfalls, to be properly appreciated, and a trip to the high Carolina mountains in spring and early summer is a never-to-be-forgotten series of joys to the lover of nature. My stock is direct from its native habitat.



RHODODENDRON MAXIMUM. Typical flower cluster

KALMIA latifolia. Mountain Laurel.

One of the grandest of our native broadleaf evergreen shrubs, attaining tree-like proportions in our Southern mountains. In cultivation it is a broad, thick shrub, and, when in full bloom, of surpassing beauty. The wheel-shaped flowers in close terminal corymbs, pure white to pink, appear in May or June in such profusion as almost to smother the foliage. Its thick, shining leaves, conspicuous the year round, make it a shrub of greatest value for massing. The hardiness of *Kalmia latifolia* is beyond doubt, it being found sparingly in Nova Scotia, and increasingly in abundance through New England and the middle Atlantic states (particularly in the higher altitudes), till the crest of the Southern Alleghanies is reached.



MOUNTAIN LAUREL

Rhododendron catawbiense, R. maximum and Mountain Laurel "Collected Clumps" by the Carload

For the area covered and effect produced a carload of Rhododendrons or Kalmias is the cheapest landscape proposition offered. I ship an unusual grade of splendid clumps, each plant a specimen and burlaped separately. Don't accept cheap stock, thrown into cars without burlaping and with the fine, hair-like rootlets inevitably exposed. You will be disappointed and find it expensive in the end. While fine results may be had from collected Rhododendrons, particularly if purchased from a reliable source, where greatest care is used in digging and handling, results are never so sure as when nursery-grown stock is used. "Collected" Rhododendrons and Kalmias delivered at your station by the carload. To be shipped from point determined by me.

Send for information and prices.



Specimen Concolor Firs at Boxford Nursery

EVERGREENS FOR AUGUST PLANTING

RHODODENDRON laetevirens (wilsoni).

Hardy, dwarf, compact Rhododendron of garden origin. Bears a profusion of deep rose-colored flowers.

myrtifolium. Myrtleleaf Rhododendron.

A fine, hardy hybrid between *R. punctatum* and *R. hirsutum*. This variety is very useful for the rockery, and the borders of the Rhododendron bed. Covered with clusters of deep rosy-pink flowers.



Block of *Pinus mughus* specimens at Boxford Nursery

Other Hardy Broadleaf Evergreens

ANDROMEDA polifolia.

A beautiful dwarf species of our Northern bogs. Grows well in rich borders. Dainty bell-flowers of delicate pink.

ARCTOSTAPHYLOS uva-ursi. Bearberry.

This delightful trailing plant is invaluable for seashore and other ground cover planting, forming solid dense mats of green. Thrives in sandy soil when established. Difficult to transplant unless pot-grown plants are used.

CHAMAEDAPHNE calyculata. Leatherleaf.

2 to 3 feet. A fine, hardy border plant for the Rhododendron bed or very moist locations. White, nodding flowers in leafy racemes in early spring.

DAPHNE cneorum. Garland Flower.

Trailing evergreen, glossy narrow leaves and a profusion of bright pink fragrant flowers in May and often again in August.

EUONYMUS radicans. Climbing Euonymus.

Invaluable for Rhododendron edging where it will make a close evergreen mat, or for background against a wall.

radicans carrieri.

Large, light-green foliage—rapid grower.

radicans vegetus.

Very large-leaf type of the preceding species. Strong grower.



KALMIA ANGUSTIFOLIA

ILEX glabra. Inkberry.

A native Holly with black shining berries in the fall. The small dark-green foliage is very attractive.

KALMIA angustifolia. Narrowleaf Laurel.

2 to 4 feet. Makes a fine, ground cover. A charming, dwarf sort of the same general character as *latifolia*, forming dense, low clumps. In early spring showy clusters of wheel-shaped, deep rose-colored flowers.

LEIOPHYLLUM buxifolium. Sand Myrtle.

A dainty low shrub with small, narrow evergreen leaves, and in May or early June profusely covered with white heath-like flowers set with pink stamens.

LEUCOTHOE catesbaei. Leucothoe.

3 to 8 feet. Few shrub evergreens of the broad-leaf sort have the grace of this one. The thick, shining green leaves are evenly disposed on long recurved branches with dense racemes of beautiful, white, bell-shaped flowers. As an under-shrub or for banks and borders of streams it is without a rival. One of the most useful of all evergreens for edging the Rhododendron or Azalea plantation. The sprays make beautiful winter decorations indoors, turning a rich bronze in the fall where exposed to the sun. Thousands of specimen clumps at Boxford Nursery.

PACHYSANDRA terminalis.

A low shrub largely used as a ground cover in dense shade and for edging of shrubberies. Foliage glossy, light green.

PIERIS (Andromeda) floribunda. Andromeda.

2 to 4 feet. One of the finest of all broadleaf American shrubs. Compact growth, with shining evergreen leaves and abundant racemes of showy white flowers in May. The next season's buds appear after the flowering season and give the plant the appearance of being in bloom the year round. My stock is all strictly American-grown.

EVERGREENS FOR AUGUST PLANTING

PRICE LIST

Specimen Broadleaf and Coniferous Evergreens for August and Autumn Planting

Note. The *net prices quoted* are for good specimens at Boxford Nursery, East Boxford P. O., Massachusetts, and include balling and burlaping on all trees over 2 feet and shrubs over 18 inches. Boxing where necessary charged at reasonable prices.

We advise truck delivery where at all possible, placing stock directly and quickly on ground to be planted, and usually the cost is but little higher than freight and express rates, which are now notoriously exorbitant and service slow and unsatisfactory.

Complete Catalog of Hardy American Plants, Evergreens, Deciduous Trees and Shrubs, Vines, Hardy Herbaceous Perennials, Ferns, etc.

Special quotations and estimates gladly given for large plantings of Pines, Firs, Spruces, Rhododendrons, Mountain Laurel, etc., for parks and woodland plantations. *We carry out complete* such plantings at reasonable cost of plans, supervision and labor. Customers thus get the benefit of expert service and are assured of satisfactory results.

Extra Specimens, specially selected, are priced accordingly.

ABIES concolor. Concolor Fir.			
	Each	10	100
18 to 24 in.....	\$2 00	\$18 00	\$165 00
2 to 3 ft.....	3 25	30 00	270 00
3 to 4 ft.....	4 50	40 00	
4 to 5 ft.....	7 00		
5 to 16 ft. specimens	\$8 00 to \$125 00 each		
fraseri. Fraser Fir.			
	Each	10	100
3 to 4 ft.....	\$2 50	\$22 00	\$200 00
4 to 5 ft.....	3 50	32 00	300 00
5 to 6 ft.....	5 00	40 00	360 00
6 to 8 ft.....	7 00	64 00	600 00
homolepis.			
18 to 24 in.....	\$3 00	\$28 00	
2 to 3 ft.....	5 00	44 00	
4 to 8 ft. specimens	\$8 00 to \$25 00 each		
veitchi. Veitch Fir.			
	Each	10	
12 to 18 in.....	\$2 60	\$24 00	
2 to 3 ft.....	6 00	54 00	
3 to 4 ft.....	8 00		
5 to 16 ft. specimens	\$10 00 to \$60 00 each		
ANDROMEDA polifolia.			
	Each	10	100
6 to 12 in.....	\$.50	\$4 40	\$40 00
ARCTOSTAPHYLOS uva-ursi. Bearberry			
	Each	10	100
2 in. pots.....	\$.80	\$7 60	\$60 00

CHAMAECYPARIS (Retinispora) obtusa.			
	Each	10	100
12 to 18 in.....	\$1 50	\$12 00	\$90 00
18 to 24 in.....	2 00	18 00	165 00
obtusa nana.			
	Each		
12 to 18 in.....	\$3 00		
2 to 2½ ft.....	6 00		
CHAMAEDAPHNE calyculata. Leatherleaf.			
	Each	10	
12 to 18 in. clumps.....	\$.60	\$5 00	
DAPHNE cneorum. Garland Flower.			
	Each	10	100
10 to 12 in.....	\$1 00	\$8 00	
JUNIPERUS chinensis pfitzeriana.			
	Each		
18 to 24 in.....	\$5 00		
communis depressa. New England Savin.			
	Each	10	100
2 to 3 ft.....	\$2 00	\$18 00	\$165 00
3 to 4 ft.....	3 00	27 00	255 00
4 to 5 ft.....	5 00	44 00	420 00
sabina. Savin.			
	Each	10	100
6 to 9 in.....	\$1 50	\$12 00	\$90 00
sabina tamariscifolia. Grey Carpet Juniper.			
	Each	10	
12 to 18 in.....	\$3 00	\$27 00	
3 to 4 ft.....	6 00		

HARLAN P. KELSEY, SALEM, MASSACHUSETTS

PRICE LIST, continued

JUNIPERUS scopulorum.

	Each	10	
9 to 12 in.....	\$1 00	\$8 00	

virginiana. Red Cedar.

	Each	10	100
2 to 3 ft.....	\$1 50	\$12 00	\$100 00
3 to 4 ft.....	2 50	22 00	
4 to 5 ft.....	3 50	30 00	
5 to 6 ft.....	5 00	40 00	
6 to 7 ft.....	7 00	64 00	
7 to 8 ft.....	10 00	90 00	
8 to 9 ft.....	12 50	112 00	
9 to 10 ft.....	18 00	160 00	
10 to 12 ft.....	20 00	180 00	
12 to 14 ft.....	30 00	270 00	
14 to 16 ft.....	35 00	320 00	

virginiana glauca. Blue Red Cedar.

	Each	10
4 to 5 ft.....	\$5 00	
5 to 6 ft.....	7 50	70 00

virginiana schottii.

	Each	10
3 to 4 ft.....	\$4 00	\$36 00

KALMIA augustifolia. Narrowleaf Laurel.

	Each	10
6 to 12 in.....	\$.50	\$4 00

latifolia. Mountain Laurel.

	Each	10	100
9 to 12 in. clumps	\$1 25	\$10 00	\$90 00
12 to 18 in. clumps	1 75	16 00	144 00
18 to 24 in. clumps	3 00	28 00	240 00
2 to 3 ft. clumps	4 00	36 00	340 00
3 to 4 ft. clumps	5 50	50 00	

LEIOPHYLLUM buxifolium. Sand Myrtle.

	Each	10
9 to 12 in. spread	\$.75	\$6 00
12 to 18 in. spread	1 00	9 00

LEUCOTHOE catesbaei. Leucothoe.

	Each	10	100
12 to 18 in. clumps	\$1 00	\$8 60	\$80 00
18 to 24 in. clumps	1 50	14 00	120 00
2 to 3 ft. clumps	2 25	20 00	192 00
2 to 3 ft. extra clumps	3 50	30 00	270 00

PACHYSANDRA terminalis.

	Each	10	100
Strong.....	\$.40	\$3 00	\$20 00

PICEA alcockiana. Alcock Spruce.

	Each
3 to 4 ft.....	\$4 00
4 to 5 ft.....	5 00

canadensis. White Spruce.

	Each	10	100
1 to 2 ft.....	\$1 50	\$12 00	\$90 00
2 to 3 ft.....	2 00	18 00	165 00
3 to 4 ft.....	2 50	22 00	
4 to 5 ft.....	3 50	32 00	
5 to 6 ft.....	5 00	44 00	
6 to 7 ft.....	8 00	76 00	
7 to 8 ft.....	10 00	90 00	
8 to 9 ft.....	12 00	112 00	
9 to 10 ft.....	15 00	140 00	
10 to 12 ft.....	20 00	180 00	
12 to 14 ft.....	25 00	224 00	
14 to 15 ft.....	30 00		

engelmanni. Engelmann Spruce.

	Each	10	100
12 to 18 in....	\$1 00	\$8 00	\$60 00
18 to 24 in....	1 50	12 00	100 00
2 to 3 ft.....	2 20	20 00	

engelmanni glauca. Blue Engelmann Spruce.

	Each	10
12 to 18 in....	\$2 00	\$18 00
18 to 24 in....	3 00	27 00

excelsa. Norway Spruce.

	Each	10	100
12 to 18 in....	\$.50	\$4 00	\$36 00
18 to 24 in....	.75	6 00	54 00
2 to 3 ft.....	1 50	12 00	110 00
3 to 4 ft.....	2 50	22 00	

omorika.

	Each
7 to 8 ft.....	\$20 00

orientalis. Oriental Spruce.

	Each	10
2 to 3 ft.....	\$4 00	\$36 00
3 to 4 ft.....	6 00	

pungens. Green Colorado Spruce.

	Each	10	100
12 to 18 in....	\$1 00	\$8 00	\$70 00
18 to 24 in....	1 50	12 00	90 00
2 to 3 ft.....	2 50	22 00	
3 to 4 ft.....	4 00	36 00	
4 to 5 ft.....	5 00	44 00	
5 to 6 ft.....	7 00	64 00	
6 to 7 ft.....	9 00	80 00	
7 to 15 ft. specimens	\$10 00 to \$50 00 each		

EVERGREENS FOR AUGUST PLANTING

PRICE LIST, continued

PICEA pungens glauca. Blue Colorado Spruce.

	Each	10
12 to 18 in.	\$2 80	\$24 00
18 to 24 in.	3 60	32 00
2 to 3 ft.	5 20	48 00
3 to 4 ft.	8 00	

pungens kosteri. Koster Blue Spruce.

	Each	10
12 to 18 in.	\$3 00	\$28 00
18 to 24 in.	4 00	38 00
2 to 3 ft.	6 00	56 00
3 to 4 ft.	9 00	86 00
4 to 5 ft.	15 00	140 00
5 to 6 ft.	20 00	180 00
6 to 7 ft.	25 00	236 00
7 to 9 ft.	\$30 00 to \$50 00 each	

PIERIS (Andromeda) floribunda. Andromeda.

	Each	10	100
12 to 18 in. clumps	\$1 75	\$16 00	\$140 00
18 to 24 in. clumps	2 75	26 00	236 00
2 to 3 ft. clumps	3 75	36 00	

PINUS banksiana (divaricata). Banks Pine.

	Each	10	100
3 to 4 ft.	\$1 25	\$8 00	\$60 00
4 to 6 ft.	2 00	16 00	120 00
6 to 8 ft.	4 00	36 00	
8 to 10 ft.	7 00	64 00	
10 to 12 ft.	10 00	90 00	
12 to 14 ft.	12 50	100 00	
14 to 16 ft.	15 00	140 00	

cembra. Cembrian Pine.

	Each	10	100
18 to 24 in.	\$2 50	\$22 00	\$200 00
2 to 3 ft.	3 50	32 00	
3 to 4 ft.	5 00	45 00	
4 to 5 ft.	8 00	75 00	

densiflora. Japanese Red Pine.

	Each	10	100
2 to 3 ft.	\$1 50	\$12 00	\$90 00
3 to 4 ft.	2 50	20 00	180 00
4 to 5 ft.	3 50	30 00	250 00
5 to 6 ft.	5 00	44 00	350 00
6 to 8 ft.	8 00	70 00	550 00

flexilis. Limber Pine.

	Each	10	100
2 to 3 ft.	\$2 00	\$18 00	\$150 00
3 to 4 ft.	3 00	27 00	

PINUS montana. Swiss Mountain Pine.

	Each	10	100
18 to 24 in.	\$2 00	\$18 00	\$160 00
2 to 3 ft.	4 00	36 00	300 00
3 to 4 ft.	6 00	55 00	

montana mughus. Mugho Pine.

	Each	10	100
12 to 18 in. spread	\$1 25	\$10 00	\$90 00
18 to 24 in. spread	2 00	18 00	150 00
2 to 3 ft. spread	4 00	36 00	300 00
3 to 4 ft. spread	7 00	64 00	550 00

nigra austriaca. Austrian Pine.

	Each	10	100
2 to 3 ft.	\$1 75	\$16 00	\$130 00
3 to 4 ft.	3 00	28 00	250 00
4 to 5 ft.	4 50	42 00	
5 to 6 ft.	6 40	60 00	
6 to 7 ft.	9 00	84 00	

ponderosa. Bull Pine.

	Each	10	100
2 to 3 ft.	\$2 00	\$18 00	\$150 00
3 to 4 ft.	4 00	36 00	
4 to 5 ft.	6 00	50 00	
5 to 6 ft.	8 00	70 00	
6 to 8 ft.	10 00	90 00	

pungens. Table Mountain Pine.

	Each	10
6 to 8 ft.	\$4 00	\$36 00
8 to 9 ft.	6 00	50 00
9 to 10 ft.	10 00	80 00
10 to 12 ft.	15 00	

resinosa. Red Pine.

	Each	10	100
2 to 3 ft.	\$1 75	\$16 00	\$140 00
3 to 4 ft.	2 50	20 00	180 00
4 to 5 ft.	4 00	36 00	320 00
5 to 6 ft.	6 00	50 00	400 00
6 to 7 ft.	8 00	70 00	

rigida. Black Pine.

	Each	10	100
5 to 6 ft.	\$4 00	\$36 00	\$300 00
6 to 8 ft.	6 00	50 00	450 00
8 to 10 ft.	10 00	80 00	
10 to 12 ft.	12 50		

HARLAN P. KELSEY, SALEM, MASSACHUSETTS

PRICE LIST, continued

PINUS strobus. White Pine. *Special prices for large quantities for forestry purposes or in car-lots.*

	Each	10	100
2 to 3 ft.	\$.75	\$6 00	\$50 00
3 to 4 ft.	1 25	10 00	80 00
4 to 6 ft.	3 00	24 00	200 00
6 to 8 ft.	6 00	50 00	400 00
8 to 10 ft.	10 00	80 00	

syvestris. Scotch Pine.

	Each	10	100
2 to 3 ft.	\$1 00	\$7 50	\$60 00
3 to 4 ft.	1 50	12 00	105 00
4 to 6 ft.	4 00	36 00	320 00
6 to 8 ft.	6 00	50 00	450 00
8 to 10 ft.	10 00	90 00	750 00
10 to 12 ft.	12 00	116 00	
12 to 14 ft.	15 00	120 00	

thunbergi. Japanese Black Pine.

	Each	10	100
12 to 18 in.	\$.75	\$5 00	\$40 00
18 to 24 in.	1 25	10 00	90 00
2 to 3 ft.	2 00	18 00	165 00

PSEUDOTSUGA douglasi. Douglas Fir.

	Each	10	100
12 to 18 in.	\$.75	\$6 00	\$44 00
18 to 24 in.	1 25	10 00	90 00
2 to 3 ft.	1 75	16 00	140 00
3 to 4 ft.	2 75	24 00	220 00
4 to 5 ft.	3 50	32 00	
5 to 6 ft.	5 00	44 00	
6 to 7 ft.	7 00	64 00	
7 to 8 ft.	8 00	76 00	
8 to 9 ft.	10 00	96 00	

douglasi glauca. Blue Douglas Fir.

	Each
2 to 3 ft.	\$4 00
3 to 4 ft.	6 00
4 to 6 ft.	8 00

RHODODENDRON carolinianum. Carolina Rhododendron.

	Each	10
12 to 18 in. clumps	\$2 50	\$22 00
18 to 24 in. clumps	4 00	38 00
2 to 3 ft. clumps	6 00	56 00

RHODODENDRON catawbiense. Catawba Rhododendron.

	Each	10	100
9 to 12 in. clumps	\$1 25	\$12 00	\$100 00
12 to 18 in. clumps	1 75	16 00	150 00
18 to 24 in. clumps	2 75	26 00	220 00
2 to 3 ft. clumps	4 00	38 00	350 00
3 to 4 ft. clumps	6 00	56 00	540 00
4 to 5 ft. clumps	9 00	86 00	
5 to 6 ft. clumps	12 50		

catawbiense hybrids.

	Each	10	100
12 to 18 in.	\$2 50	\$24 00	\$220 00
18 to 24 in.	3 50	34 00	320 00
24 to 30 in.	5 00	48 00	

The following varieties in stock:

album grandiflorum	Hannibal
album elegans	H. H. Hunnewell
caractacus	Henry W. Sargent
catawbiense album	Ignatius Sargent
Charles Dickens	Lady Clermont
Charles S. Sargent	Mrs. Milner
delicatissimum	purpureum elegans
E. S. Rand	roseum elegans
F. D. Godman	roseum luteum
giganteum	

catawbiense var. compacta. New Introduction.

	Each	10	100
9 to 12 in. clumps	\$1 50	\$14 00	\$120 00
12 to 18 in. clumps	2 00	18 00	160 00
18 to 24 in. clumps	3 00	28 00	260 00
2 to 3 ft. clumps	5 00	44 00	420 00
3 to 4 ft. clumps	7 50	70 00	650 00

laetevirens (wilsoni).

	Each	10
18 to 24 in.	\$5 00	\$45 00
2 to 2½ ft.	6 00	55 00

maximum. Great American Rosebay.

	Each	10
18 to 24 in. clumps	\$2 00	\$18 00
2 to 3 ft. clumps	3 00	28 00
3 to 4 ft. clumps	4 50	40 00
4 to 5 ft. clumps	8 00	

myrtifolium. Myrtleleaf Rhododendron.

	Each	10
12 to 18 in.	\$4 00	\$36 00
18 to 24 in.	5 00	45 00

EVERGREENS FOR AUGUST PLANTING

PRICE LIST, continued

TAXUS canadensis. Canadian Yew.

	Each	10	100
6 to 9 in.....	\$.75	\$7 00	\$60 00
9 to 12 in.....	1 00	9 00	80 00
12 to 15 in.....	1 50	12 00	115 00

cuspidata (capitata). Japanese Yew.

	Each	10
9 to 12 in.....	\$1 00	\$9 00
12 to 18 in.....	2 00	18 00

cuspidata brevifolia.

	Each	10
6 to 9 in.....	\$1 50	\$12 00
9 to 12 in.....	2 40	21 00
12 to 18 in.....	3 50	

THUJA occidentalis. American Arborvitae.

	Each	10	100
12 to 18 in.....	\$.40	\$3 00	\$24 00
18 to 24 in.....	60	4 40	36 00
2 to 3 ft.....	1 00	7 00	50 00
3 to 4 ft.....	1 50	14 00	120 00
4 to 5 ft.....	2 50	20 00	180 00
5 to 6 ft.....	3 50	30 00	
6 to 8 ft.....	4 50	40 00	
8 to 9 ft.....	6 00		

occidentalis aurea. Golden Arborvitae.

	Each	10
4 to 5 ft.....	\$3 00	
5 to 6 ft.....	4 00	\$36 00
6 to 7 ft.....	6 00	

occidentalis globosa. Globe Arborvitae.

	Each	10	100
9 to 12 in.....	\$1 00	\$9 00	\$75 00

THUJA occidentalis pyramidalis. Pyramidal Arborvitae.

	Each	10	100
18 to 24 in.....	\$1 00	\$8 00	\$70 00
2 to 3 ft.....	1 50	14 00	120 00
3 to 4 ft.....	2 25	20 00	180 00
4 to 5 ft.....	3 50	32 00	
5 to 6 ft.....	5 00	44 00	
6 to 7 ft.....	7 00	60 00	
7 to 8 ft.....	9 00		

occidentalis wareana. Ware Arborvitae.

	Each	10	100
12 to 18 in.....	\$.80	\$6 00	\$50 00

orientalis elegantissima.

	Each	10
18 to 24 in.....	\$1 25	\$10 00
2 to 3 ft.....	2 50	22 00
3 to 4 ft.....	4 00	38 00
4 to 5 ft.....	6 00	56 00

TSUGA canadensis. Canadian Hemlock.

	Each	10	100
12 to 18 in.....	\$1 00	\$9 00	\$86 00
18 to 24 in.....	1 50	14 00	132 00
2 to 3 ft.....	2 00	18 00	176 00
3 to 4 ft.....	3 00	28 00	260 00
4 to 5 ft.....	4 50	42 00	400 00
5 to 6 ft.....	6 50	60 00	576 00
6 to 7 ft.....	8 50	80 00	760 00
7 to 8 ft.....	12 00	112 00	
8 to 10 ft.....	15 00	140 00	
10 to 12 ft.....	18 00		

caroliniana. Carolina Hemlock.

	Each	10	100
9 to 12 in.....	\$1 00	\$9 00	\$80 00
12 to 18 in.....	1 50	14 00	132 00
18 to 24 in.....	2 25	20 00	180 00
2 to 3 ft.....	3 50	30 00	270 00
3 to 4 ft.....	6 00	50 00	450 00

6 to 9 ft. extra specimens,
\$30 00 to \$60 00 each

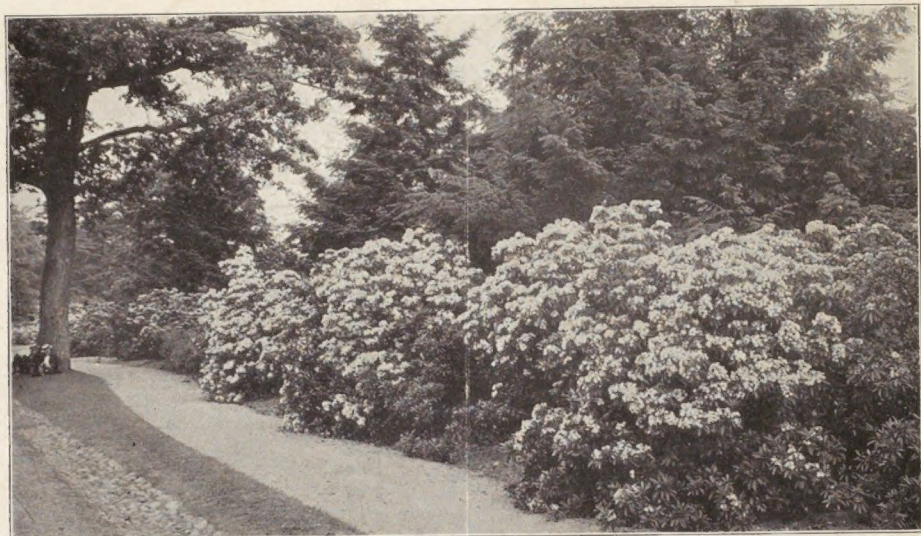


Photo by H. P. K.

Mass of MOUNTAIN LAUREL with Conifer background at Arnold Arboretum



Graceful sprays of LEUCOTHOE CATESBAEI

Address all orders and correspondence to
HARLAN P. KELSEY, SALEM, MASSACHUSETTS